

DETAILS ON YOUR NEXT STEPS

SIGN UP FOR ACCEPTED STUDENT DAY!

Meet your future classmates and tour campus! Chat with Admissions, Financial Aid, Health Services, and Student Life about enrollment steps. **Set that up at steu.edu/visit.**

SUBMIT YOUR FAFSA!

To determine your eligibility for federal, state, or SEU need-based aid, you'll need to submit your FAFSA (Free Application for Federal Student Aid) as soon as possible at studentaid.gov.

- SEU's school code: 002600
- If you've already submitted, ensure that SEU is on your school list
- Make sure Admissions has your Social Security Number (Call us at (973) 290-4700 to confirm)
- Opt in to electronic communications from Financial Aid!
- Send an email to financialaid@steu.edu with the statement "I, (your name), give Saint Elizabeth University consent to send my financial information to me electronically, via email."

SECURE YOUR SEAT!

To become an official SEU student, submit your enrollment deposit (\$200) at steu.edu/deposit no later than May 1. This payment will be credited to your account.

- After May 1, the deposit is due two weeks after acceptance
- Those officially admitted into the EOF program have a reduced deposit of \$50

RESERVE YOUR ROOM!

If you're planning to live on campus, submit your room deposit (\$200) no later than June 1 at steu.edu/newhousing.

Room requests are accepted after this deadline; however, availability may be limited. This payment will be credited to your account.

- Your Residence Life Survey will be included in your payment receipt email
- Please complete this ASAP, as it will assist us in selecting a room (and possible roommate) for you
- **This deposit is waived for all EOF students**

COMPLETE YOUR HEALTH REQUIREMENTS

Find the appropriate forms at steu.edu/medreqs and get started as soon as possible. Contact the Office of Student Health Services at (973) 290-4175 or immunization@steu.edu with any questions.

- These forms are due no later than July 1
- Summer program students (EOF, etc.) must submit completed forms prior to May 1
- You cannot attend class or move in until your health documents have been submitted and approved
- Securely upload docs at steu.edu/meduploads

Future SEU Student-Athletes

Anyone interested in trying out for a team must:

- Contact the appropriate coach as soon as possible
- Complete the Athletic Pre-Participation Physical Exam form found at steu.edu/sportsphysical IN ADDITION TO the general physical exam required for all students (part of the health documents mentioned above)

Student Athlete questions can be directed to SEU's Athletics Department at (973) 290-4265 or twagenblast@steu.edu.

REGISTER FOR EAGLES DAY

Freshmen are REQUIRED to attend an Eagles Day. (Transfer students are highly encouraged. Summer program participants such as those participating in EOF are not required to attend).

At Eagles Day, you will:

- Register for classes with your advisor
- Talk with a financial aid counselor to discuss your financing plan and review required documents
- Set up your loaner laptop
- Tour campus and residence halls
- BEFORE attending Eagles Day, you must set up your SEU email and self-service accounts at steu.edu/setupaccount. This process will require your System ID, which will be provided to you upon the receipt of your enrollment deposit. Contact your admissions counselor if your ID was not provided to you

Register for Eagles Day at steu.edu/visit

REQUEST YOUR FINAL TRANSCRIPT

Freshmen are required to submit a final, official transcript from their high school showing all grades as well as their graduation date BEFORE the start of classes.

Contact your high school counselor to have this sent directly to SEU.

- Transfer students and all others with previous college credits must submit official college transcripts
- Students who fail to submit these documents will be placed on a registration and financial aid hold

SIGN UP FOR NEW STUDENT ORIENTATION

All first-year students are REQUIRED to attend Orientation.

- Explore campus, get to know your classmates, and participate in fun activities
- Sign up at steu.edu/orientation/undergraduate

COMPLETE YOUR FERPA

steu.edu/ferpaauthorization

WAIVE SEU HEALTH INSURANCE

All students are required to have health insurance and are automatically enrolled in SEU's insurance plan.

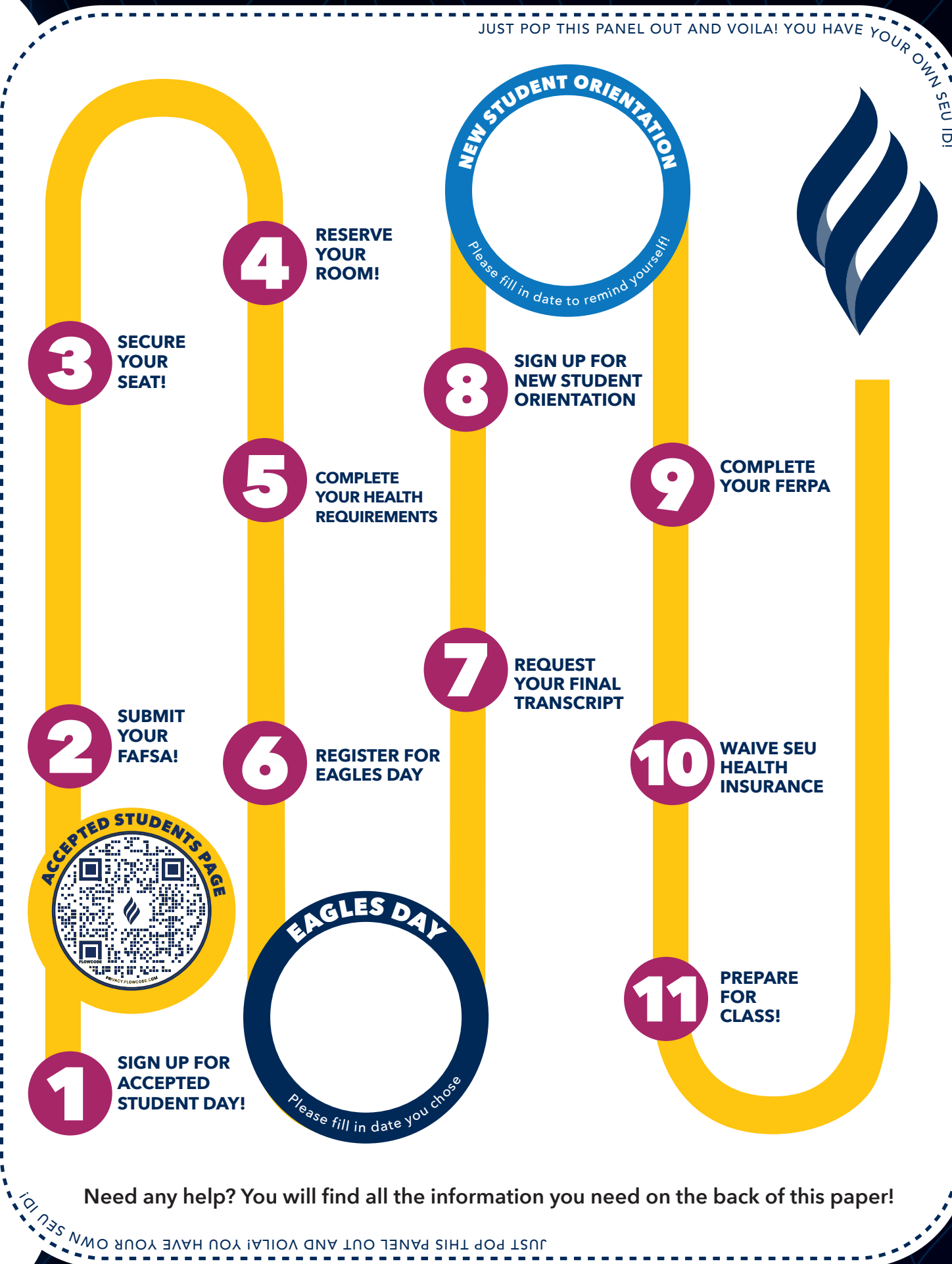
- Those covered by their parent/legal guardian's insurance may waive SEU's coverage
- The waiver becomes available after receiving a tuition bill and enrollment email from First Student
- Contact the Bursar's Office with questions: bursar@steu.edu or (973) 290-4443

PREPARE FOR CLASS!

Check in with your admissions counselor to ensure you are cleared for class and move in!

Accessibility Accommodations

Please note: If you require any type of academic accommodations, we encourage you to contact the Coordinator of Accessibility Services directly at (973) 290-4261 as soon as possible.



Need any help? You will find all the information you need on the back of this paper!

FROM HERE, YOU WILL SOAR!



40+
STUDENT
CLUBS,
ACTIVITIES
& INTRAMURAL
TEAMS, LIKE
ESPORTS
& **STUNT**
ON CAMPUS



“As a Presidential Scholarship recipient, I can afford to attend SEU with support that covers most of my college expenses. I am free to participate in more activities and purchase additional supplies to receive a high-quality education.”

-Sydney Salomon, '24 Nursing

TOTAL STUDENT POPULATION:
1,200

“When I started college at SEU, I was very quiet and introverted. In the past year, I’ve made friends and been encouraged to do a lot of extracurricular activities and get on-campus jobs!”



-Cline Berardo, '24 English Major, Minor in History and Education

11:1
STUDENT TO FACULTY RATIO



1 HOUR VIA TRAIN TO NYC
1.5-HOUR DRIVE TO PHILADELPHIA



“Having the opportunity to make one-on-one connections with my professors led me to my first internship.”

-Jesse Guerrero, '23 Combined Degree Criminal Justice and M.A. in Justice Administration

60+
UNDERGRAD PROGRAMS
(MAJORS & MINORS)

Saint Elizabeth University admits students of any race, color, and national and ethnic origin to all the rights, privileges, programs, and activities generally accorded or made available to students at the school. It does not discriminate on the basis of race, color, or national and ethnic origin in administration of its educational policies, admissions policies, scholarship and loan programs, and athletic and other school-administered programs. Saint Elizabeth University is also an equal opportunity employer. It does not discriminate on the basis of race, color, religion, sex, sexual orientation, gender identity or expression, age, disability, marital status, citizenship, national origin, genetic information, or any other characteristic protected by law.

POST YOUR ID IMAGE TO INSTAGRAM!

JUST POP THIS PANEL OUT AND VOILA! YOU HAVE YOUR OWN SEU ID!



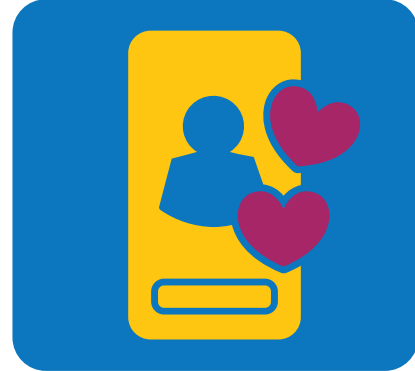
Sign your name in the spot allotted



Pop the perforated calendar out to stick on the wall



Hold your new SEU ID up and have someone take your photo



Post to Instagram with the hashtag #futureagle_SEU



We will reach out and send you SEU swag



Follow the steps and prepare to soar

YOU ARE WELCOME! JOIN US!

Follow the steps we put on the back side of this panel, and you will enjoy a seamless entry into the SEU community!

OFFICE OF ADMISSIONS

Santa Rita Hall - 3rd Floor
Phone: (973) 290-4700
apply@steu.edu
Hours of Operation:
M-F: 8:30 am-4:30 pm

OFFICE OF FINANCIAL AID

Santa Rita Hall - 2nd Floor
Phone: (973) 290-4445 (o)
(973) 290-4421 (f)
financialaid@steu.edu
Office Hours:
M-F: 8:30 am-4:30 pm

OFFICE OF THE BURSAR

Santa Rita Hall 212
Phone: (973) 290-4443
bursar@steu.edu
Office Hours:
M-F: 8:30 am-4:30 pm

OUR NEWEST SCHOLAR

WRITE YOUR NAME HERE



Saint Elizabeth University

MORRISTOWN, NJ

#FUTUREEAGLE_SEU

JUST POP THIS PANEL OUT AND VOILA! YOU HAVE YOUR OWN SEU ID!